

Rack In The Cases Ltd

AD:Room 2802,Building A,World Trade plaza,No.8,Fuhong Road,
Futian District,Shenzhen China

Web:www.raykglobal.com

Tel: +86 755-82500272

Fax:+86 755-25322790

RK Pipe and drape

>>>Company profile



Pipe and drapes are composed of uprights, bases, crossbars and fabric drapes. Uprights are usually manufactured from aluminum that is usually lightweight but compact-resist. Uprights and bases are connected to make the structure stand up. Bases are usually made from steel that keep the whole structure stable. The weight of base varies a lot ranging from 6 to 62 lb according to real needs. Fabric drapes are usually made from flame resistant material. They are usually supported by crossbars which can slip into the rod pockets in the drapes. At each end of the crossbars, a hook is used to fix onto the slots of the uprights. Thus a whole structure is finished. Pipe and drape are now widely employed in expo and exhibitions, sports, performance and other activities and ceremonies. This is because these movable backdrops are not only easy to install and transport, but also available in different colors and sizes for various occasions. These products, in addition, can also help users save a lot of money when they have to divide a space or make certain decorations.

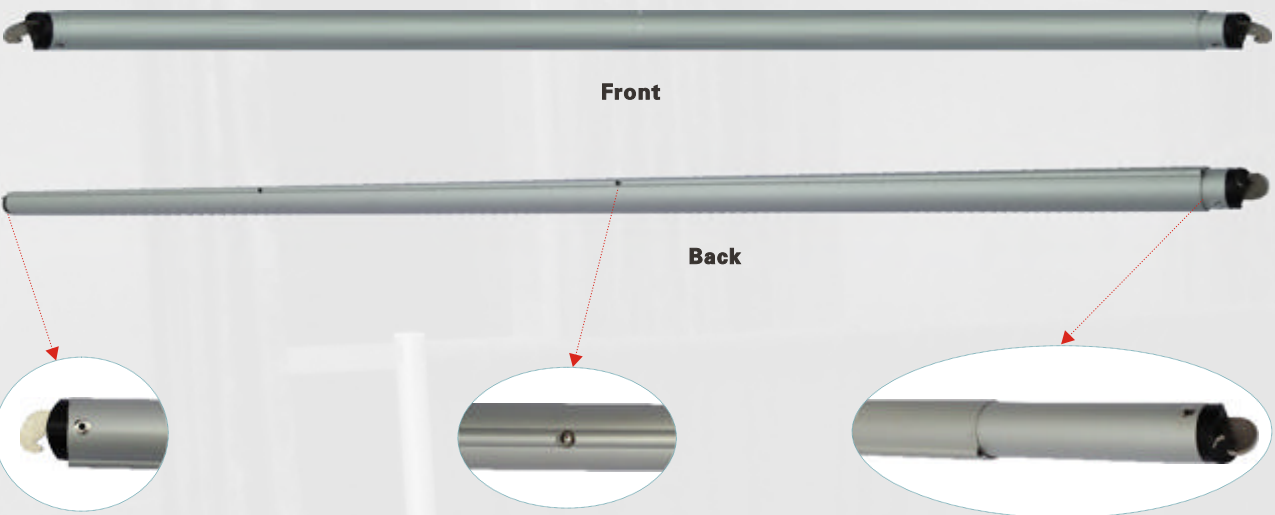
Founded in 2001, RK is now one of the leading solution suppliers for pipe and drapes. Kept up with the latest market trend, RK is endeavored to provide the finest products by continuous innovation and design. We have upgraded and expanded our pipe and drape product line rapidly in recently years and have delivered our products to clients in over 30 countries for their specific occasion needs.



CONTENTS

1	Crossbar
2	Special Crossbars
3	Upright
4	Base
5	Standard Uprights for Trade Show Booths
6	Trade Show Booths
7	Pipe and Drape Backdrop Booth
8	10ft-14ft Backdrop Systems
10	Velour drape
11	Poly Drapery
13	Banjo Cloth
14	Chelloffon Drapes
15	Accessories
16	Installation steps
17	Square Roof Tent
18	Photo Booth Package
19	Packing
21	Motorized curtain
23	Projects

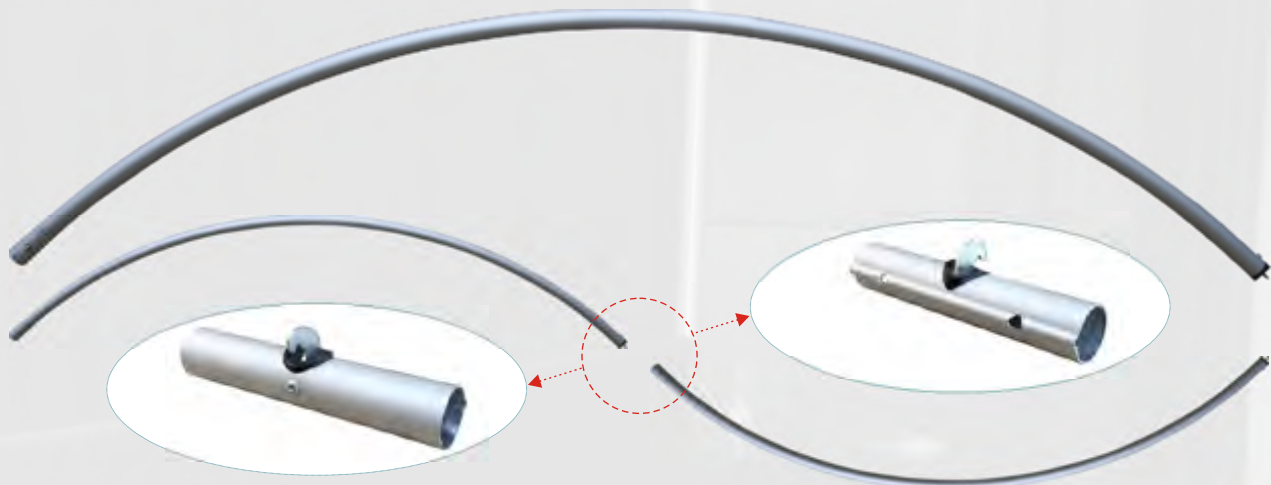
Crossbar



Telescopic Drape Supports - Crossbars	
Code	Size
RK-TDS23	2' - 3' TDS (stops at 3')
RK-TDS35	3' - 5' TDS (stops at 5')
RK-TDS47	4' - 7' TDS (stops at 6' & 7')
RK-TDS58	5' - 8' TDS (stops at 8')
RK-TDS610	6' - 10' TDS (stops at 8' & 10')
RK-TDS712	7' - 12' TDS (stops at 10' & 12')
RK-TDS814	8' - 14' TDS (stops at 10', 12' & 14')
RK-TDS916	9' - 16' TDS (stops at 12', 14' & 16')

King-size rod - 3Pc Special Drape Support Crossbars	
Code	Size
RK-TDS1018-K	10' - 18' TDS (3-Pc Special stops at 12', 14', 16' & 18')
RK-TDS1120-K	11' - 20' TDS (3-Pc Special stops at 13', 14', 16', 17', 18' & 20')
RK-TDS1222-K	12' - 22' TDS (3-Pc Special stops at 14', 16', 18', 20', 21' & 22')
RK-TDS1324-K	13' - 24' TDS (3-Pc Special stops at 16', 18', 19', 21', 22' & 24')
RK-TDS1426-K	14' - 26' TDS (3-Pc Special stops at 16', 18', 20', 22', 24' & 26')

Special Crossbars



Special Crossbars	
Telescopic Drape Supports - Segment of a circle Crossbars	
Code	Size
RK-TDS-SC0405	4'-5' TDS (2 piece special drape support)
RK-TDS-SC0607	6'-7' TDS (2 piece special drape support)
RK-TDS-SC0809	8'-9' TDS (2 piece special drape support)
RK-TDS-SC1011	10'-11' TDS (2 piece special drape support)
RK-TDS-SC1213	12'-13' TDS (2 piece special drape support)
RK-TDS-SC1415	14'-15' TDS (2 piece special drape support)
RK-TDS-SC1617	16'-17' TDS (2 piece special drape support)
	Special 2pc special drape support
	(Total height x price per foot)

Roundness Crossbars	
Code	Size
RK-RC0404X4	4' - 4' Roundness Crossbars (4 Piece special drape support)
RK-RC0505X4	5' - 5' Roundness Crossbars (4 Piece special drape support)
RK-RC0606X4	6' - 6' Roundness Crossbars (4 Piece special drape support)
RK-RC0707X4	7' - 7' Roundness Crossbars (4 Piece special drape support)
RK-RC0808X4	8' - 8' Roundness Crossbars (4 Piece special drape support)
RK-RC0909X4	9' - 9' Roundness Crossbars (4 Piece special drape support)
RK-RC1010X4	10' - 10' Roundness Crossbars (4 Piece special drape support)
	Special 4pc special drape support (total O.D. x price per foot)

Upright



Adjustable Uprights with slip-lock collar

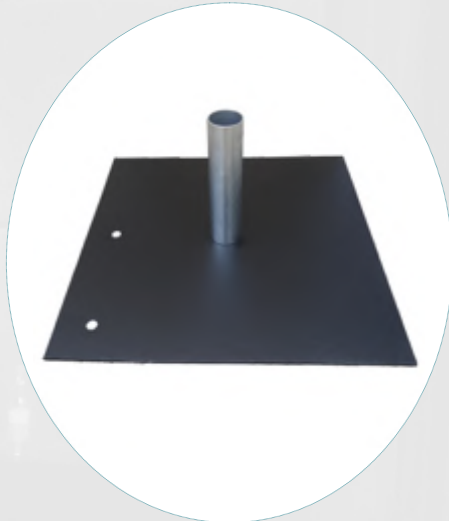
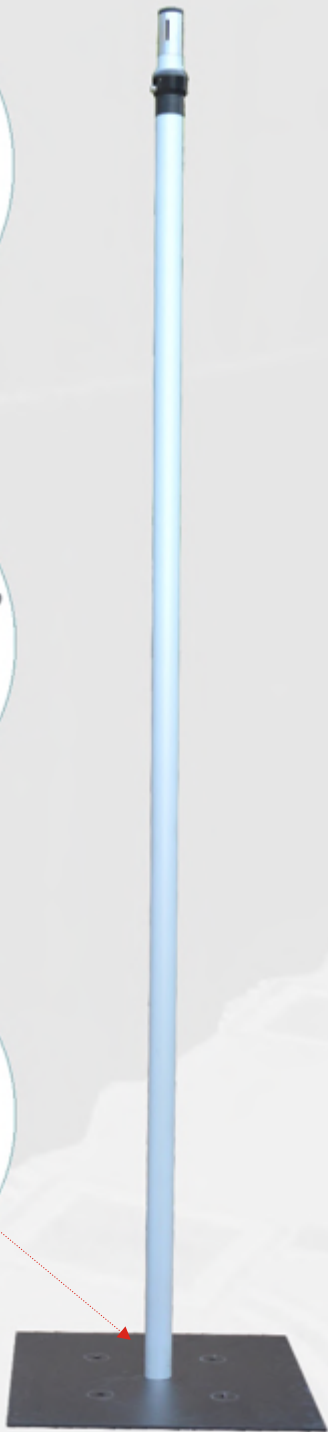
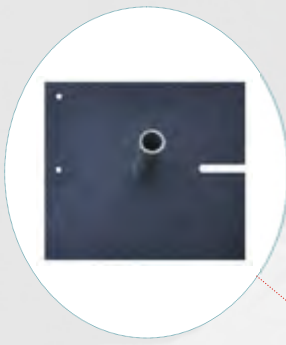
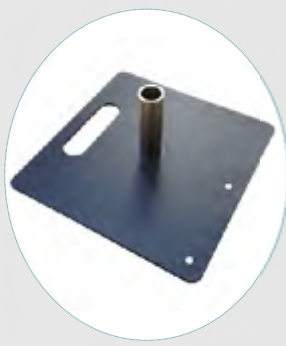
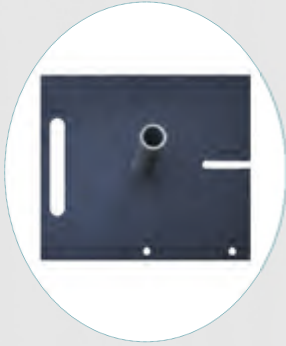
Two Piece Upright with Pin & Scrow

Code	Size	
RK-TS35	3' - 5'	Adjustable Upright , Two-Piece pipe with pin & scrow
RK-TS47	4' - 7'	Adjustable Upright , Two-Piece pipe with pin & scrow
RK-TS58	5' - 8'	Adjustable Upright , Two-Piece pipe with pin & scrow
RK-TS610	6' - 10'	Adjustable Upright , Two-Piece pipe with pin & scrow
RK-TS712	7' - 12'	Adjustable Upright , Two-Piece pipe with pin & scrow
RK-TS814	8' - 14'	Adjustable Upright , Two-Piece pipe with pin & scrow
RK-TS916	9' - 16'	Adjustable Upright , Two-Piece pipe with pin & scrow
RK-TS1018	10' - 18'	Adjustable Upright , Two-Piece pipe with pin & scrow
RK-TS1120	11' - 20'	Adjustable Upright , Two-Piece pipe with pin & scrow
RK-TS1222	12' - 22'	Adjustable Upright , Two-Piece pipe with pin & scrow
RK-TS1324	13' - 24'	Adjustable Upright , Two-Piece pipe with pin & scrow
RK-TS1426	14' - 26'	Adjustable Upright , Two-Piece pipe with pin & scrow

Three Piece Upright with Pin & Scrow

Code	Size	
RK-TS511	5' - 11'	Adjustable Upright , Two-Piece pipe with pin & scrow
RK-TS614	6' - 14'	Adjustable Upright , Two-Piece pipe with pin & scrow
RK-TS717	7' - 17'	Adjustable Upright , Two-Piece pipe with pin & scrow
RK-TS820	8' - 20'	Adjustable Upright , Two-Piece pipe with pin & scrow
RK-TS923	9' - 23'	Adjustable Upright , Two-Piece pipe with pin & scrow

Base



Base plate - Black Powder Coated Bases

Code	Size	
RK-B814-316-BK	8" x 14" x 3/16"	Base plate
RK-B1416-316-BK	14" x 16" x 3/16"	Base plate
RK-B1818-316-BK	18" x 18" x 3/16"	Base plate
RK-B2424-316-BK	24" x 24" x 3/16"	Base plate
RK-B1818-516-BK	18" x 18" x 5/16"	Base plate
RK-B2424-516-BK	24" x 24" x 5/16"	Base plate
RK-B1818-38-BK	18" x 18" x 3/8"	Base plate
RK-B2424-38-BK	24" x 24" x 3/8"	Base plate

Special Base plate

Code	Size	
RK-B2637-316-BK	260 x 375 x 5mm	Base plate
RK-B4242-316-BK	420 x 420 x 5mm	Base plate
RK-B5050-316-BK	500 x 500 x 5mm	Base plate
RK-B5063-316-BK	500 x 630 x 5mm	Base plate
RK-B5050-516-BK	500 x 500 x 8mm	Base plate
RK-B5063-516-BK	500 x 630 x 8mm	Base plate
RK-B5050-38-BK	500 x 500 x 10mm	Base plate
RK-B5063-38-BK	500 x 630 x 10mm	Base plate

Standard Uprights for Trade Show Booths



Standard uprights	
Code	Description
Su315	3' (with plastic cap)
SU615	6'
SU815	8'
Special Heights available - 1 5/8" O.D (total height x price per foot)	
SU316	3' (with plastic cap)
SU616	6'
SU816	8'
Special Heights available - 1 13/16" O.D (total height x price per foot)	
Su320	3' (with plastic cap)
Su620	6'
SU820	8'
Special Heights available - 2" O.D (total height x price per foot)	
SLOTS	Additional set of 4 slots (per set)

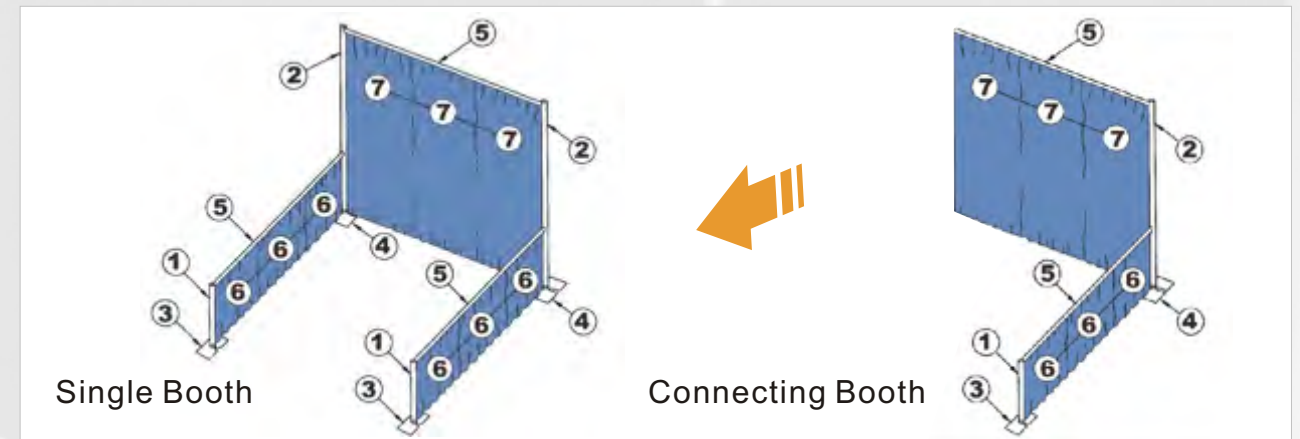
BANJO Cloth Drapes - Flame Resistant (Trade Show Backdrop Drapery)	
Code	Description
331FT60AX12	60" wide x 144" high for 12' high back wall
331FT60AX10	60" wide x 120" high for 10' high back wall
331FT60AX8	60" wide x 96" high for 8' high back wall
331FT60AX6	60" wide x 72" high for 6' high back wall
331FT60AX3	60" wide x 36" high for 3' high back wall

BANJO Rod Pocket Backdrops (2 Panels are needed for each 10' section)	
Code	Description
331FT144X3	144" wide x 36" high
331FT60AX (1)	Special Heights available - 60" wide (total height x price per foot)

Sign Holder Frame - Directional Sign holder (4' Height)	
Code	Description
RK-SHF-8X12	Wood board Holds sign 8" W X 12" H up to 5/16" thick
RK-SHF-12X19	Wood board Holds sign 12" W X 19" H up to 5/16" thick



Trade Show Booths



Single Booth

Connecting Booth

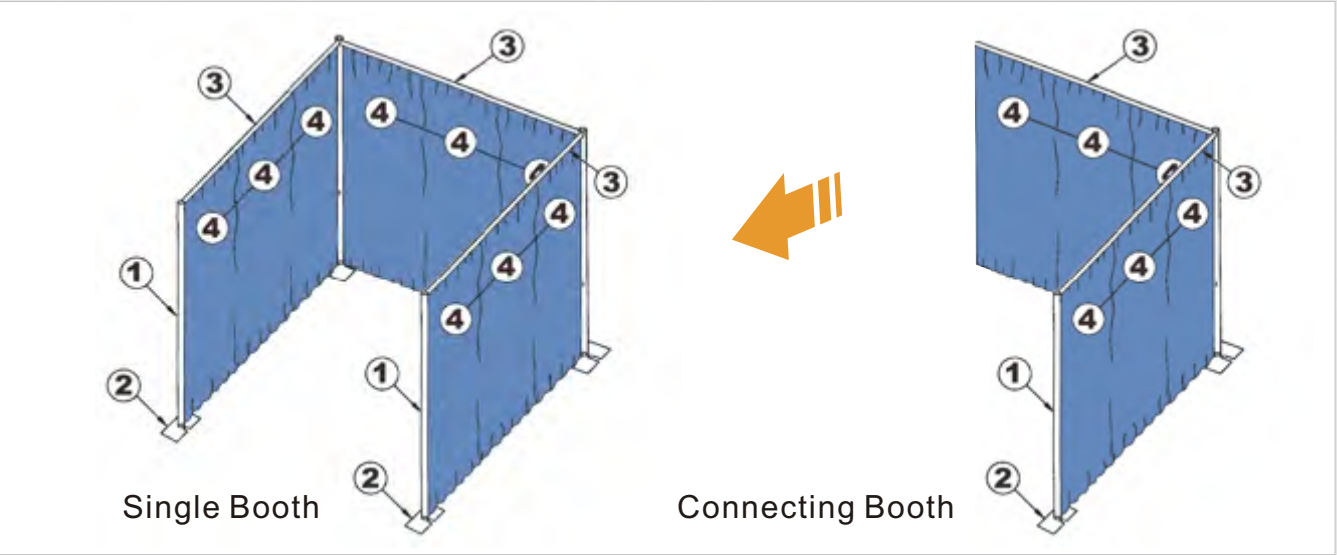
Single booth

Model	Description	Q'ty (Sets)
RK-315	3' X 1-1/2" O.D. Standard Uprights	2pcs
RK-815	8' X 1-1/2" O.D. Standard Uprights	2pcs
RK-B814-BK	8" x 14" x 3/16" Base plate - with 2" Pin & Scrow	2pcs
RK-B1416-BK	14" x 16" x 3/16" Base plate - with 2" Pin & Scrow	2pcs
RK-TDS610	6'-8'-10' Telescopic Drape Support	3pcs
600035	3' high X 5' wide (34" X 58") Banjo Drape Panels	6pcs
600085	8' high X 5' wide (94" X 58") Banjo Drape Panels	3pcs

Connecting Booths

Model	Description	Q'ty (Sets)
RK-315	3' X 1-1/2" O.D. Standard Uprights	1pcs
RK-815	8' X 1-1/2" O.D. Standard Uprights	1pcs
RK-B814-BK	8" x 14" x 3/16" Base plate - with 2" Pin & Scrow	1pcs
RK-B1416-BK	14" x 16" x 3/16" Base plate - with 2" Pin & Scrow	1pcs
RK-TDS610	6'-8'-10' Telescopic Drape Support	2pcs
600035	3' high X 5' wide (34" X 58") Banjo Drape Panels	3pcs
600085	8' high X 5' wide (94" X 58") Banjo Drape Panels	3pcs

Pipe and Drape Backdrop Booth



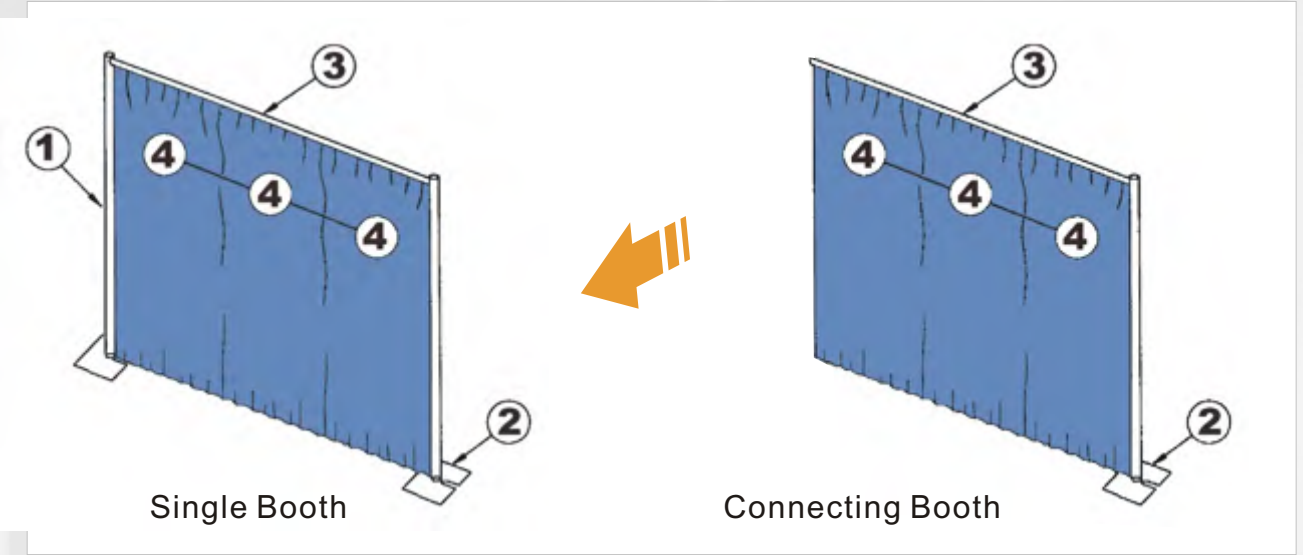
Modular Feature: To expand just add component as needed

Optional Packages

3 Foot Tall - Single Backdrops Booth		Q'ty (Sets)
RK-315	3' X 1-1/2" O.D. Standard Uprights	4pcs
RK-B814-BK	8" x 14" x 3/16" Base plate - with 2" Pin & Scrow	4pcs
RK-TDS610	6'-8'-10' Telescopic Drape Support	3pcs
600035	3' high X 5' wide (34" X 58") Banjo Drape Panels	9pcs

3 Foot Tall - Connecting Backdrops		Q'ty (Sets)
RK-315	3' X 1-1/2" O.D. Standard Uprights	2pcs
RK-B814-BK	8" x 14" x 3/16" Base plate - with 2" Pin & Scrow	2pcs
RK-TDS610	6'-8'-10' Telescopic Drape Support	2pcs
600035	3' high X 5' wide (34" X 58") Banjo Drape Panels	6pcs

10ft-14ft Backdrop Systems

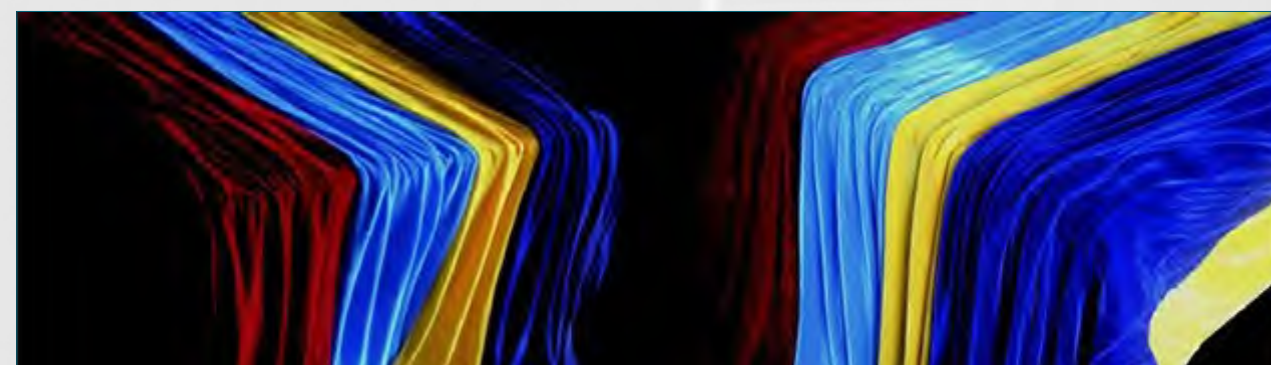
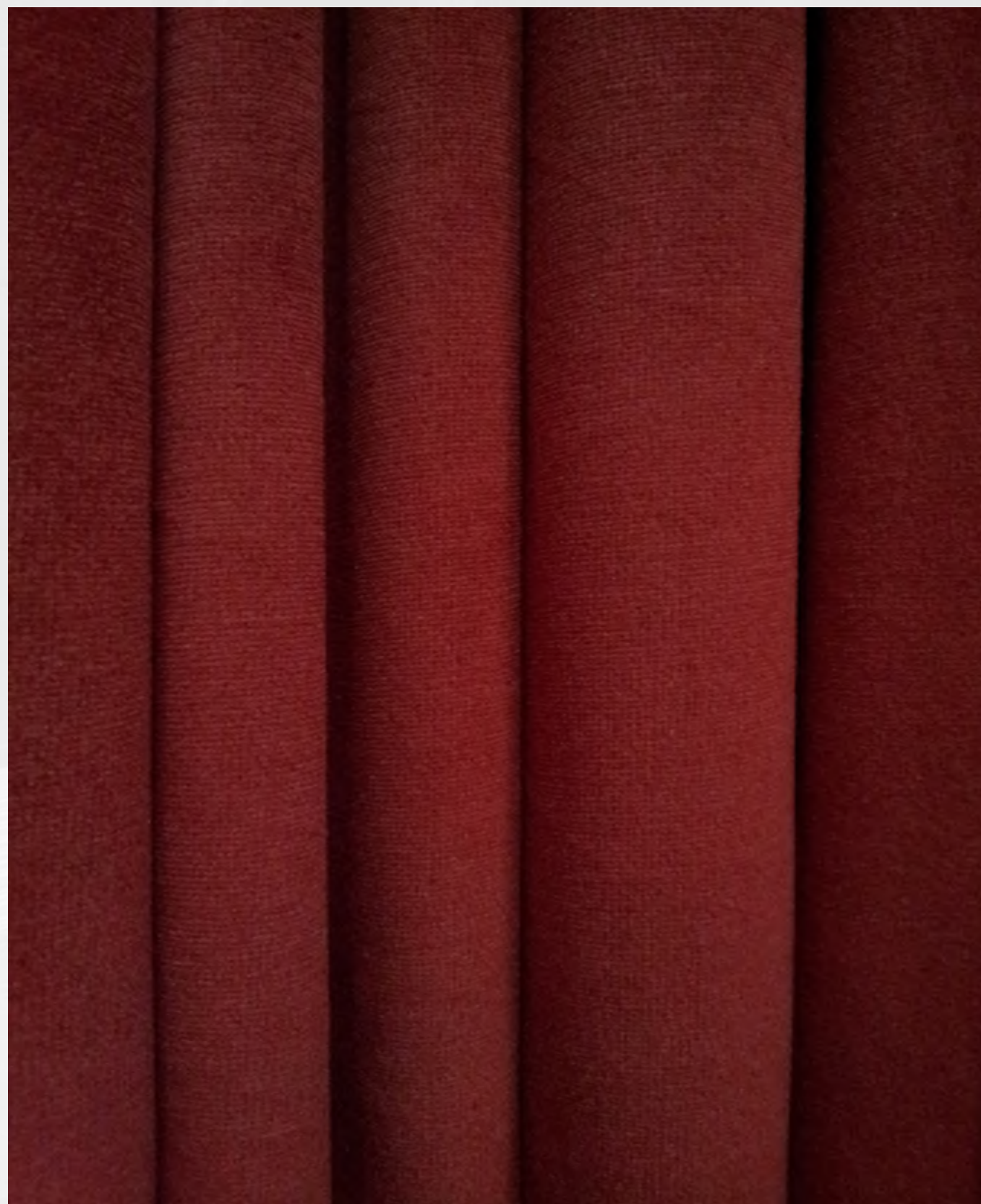


Component

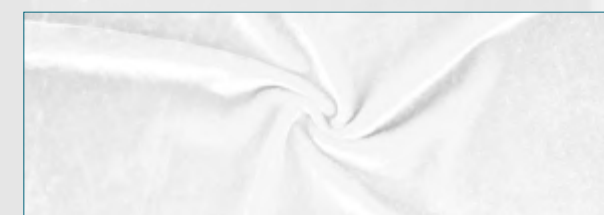
10 Foot Tall - Single Backdrops		Q'ty (Sets)
REK-TS610	Adjustable 6 to 10 foot tall UPRIGHTS - with Pin & Scrow	2pcs
RK-B1818-BK	18" x 18" x 3/16" Base plate	2pcs
RK-TDS610	6'-8'-10' Telescopic Drape Support	1pcs
600105	10' high X 5' wide (118" X 58") Banjo Drape Panels	3pcs

10 Foot Tall - Connecting Backdrops		Q'ty (Sets)
REK-TS610	Adjustable 6 to 10 foot tall UPRIGHTS - with Pin & Scrow	1pcs
RK-B1818-BK	18" x 18" x 3/16" Base plate	1pcs
RK-TDS610	6'-8'-10' Telescopic Drape Support	1pcs
600105	10' high X 5' wide (118" X 58") Banjo Drape Panels	3pcs

Velour Drape



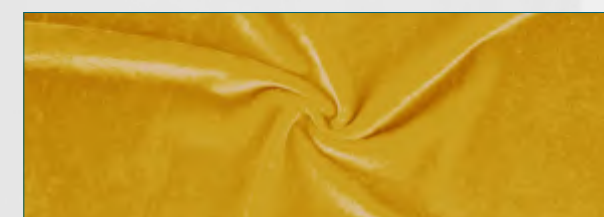
388M588DX-1



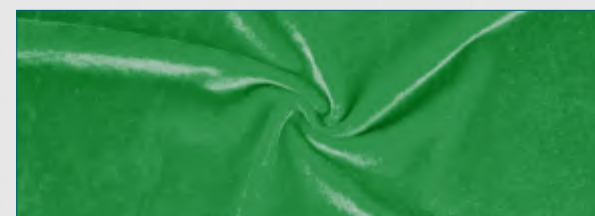
388M588DX-2



388M588DX-3



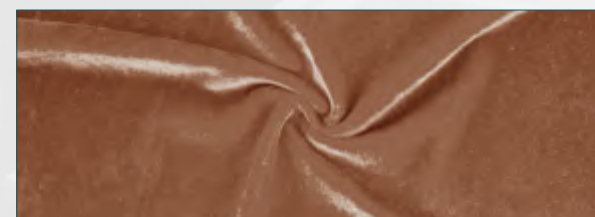
388M588DX-4



388M588DX-5



388M588DX-6



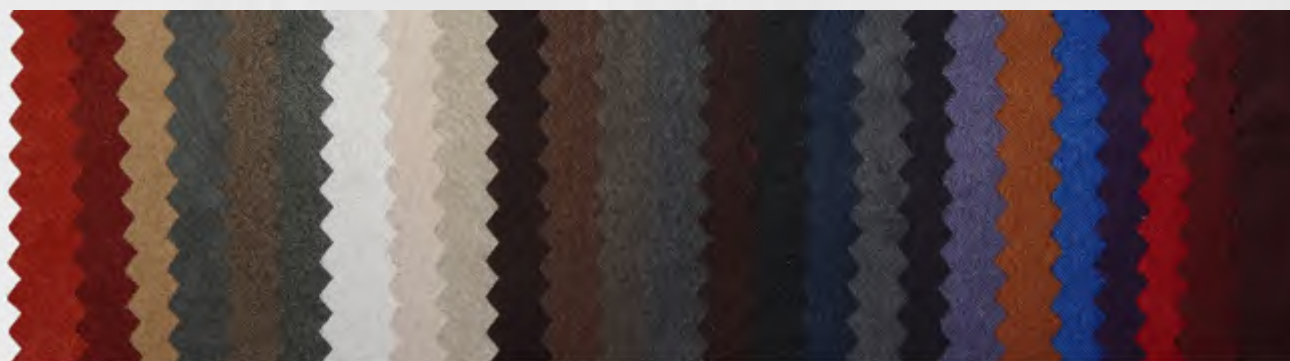
388M588DX-7



388M588DX-8

Colour Option

1 2 3 4 5 6 7 8 9 10 11 12 13 14 15 16 17 18 19 20 43 44 45 46 47



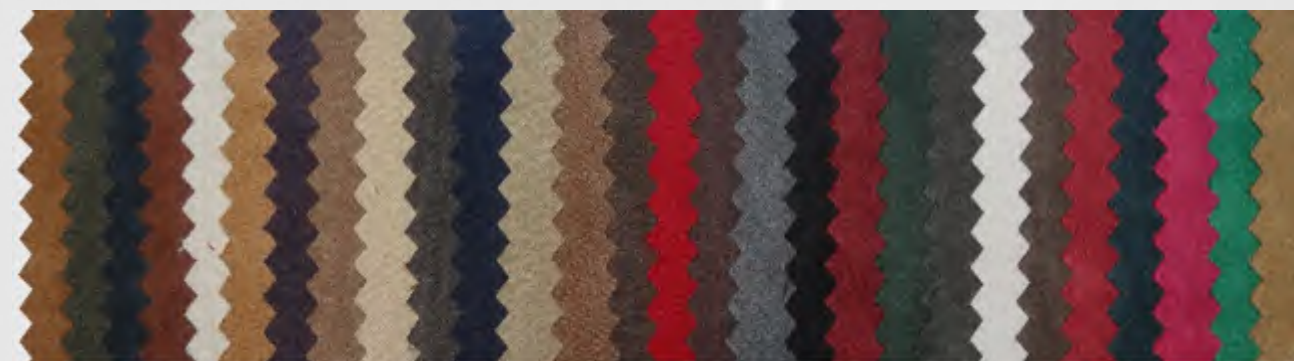
48 49 50 51 52 53 54 65 125 126 127 128 129 130 131 132 133 134 135 136 137 138 139 140 141 142



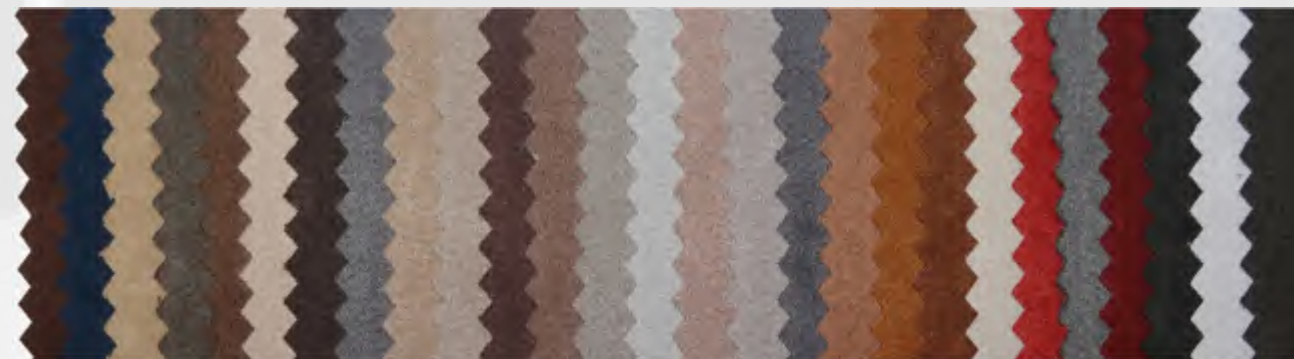
143 144 145 146 147 148 149 150 151 152 153 154 155 156 157 158 159 160 161 162 163 164 165 166



67 68 70 71 72 73 74 75 76 77 78 79 80 81 82 83 84 85 86 88 89 90 91 92 93 94 95 96



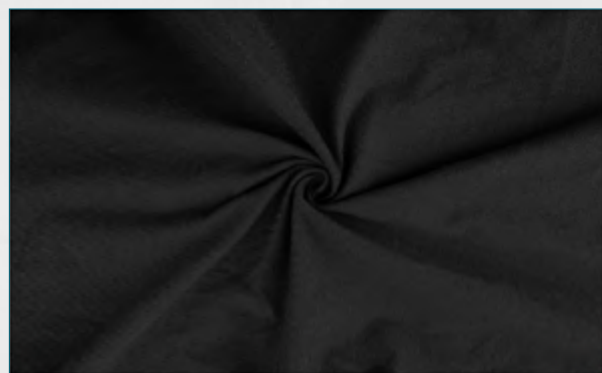
97 98 99 100 101 102 103 104 105 106 107 108 109 110 101 112 113 114 115 116 119 121 122 123 124 168 169



170 171 172 173 174 175 176 177 178 179 180 181 182 183 184 185 186 187 188 189 190 191 192 193 194 195 196 197



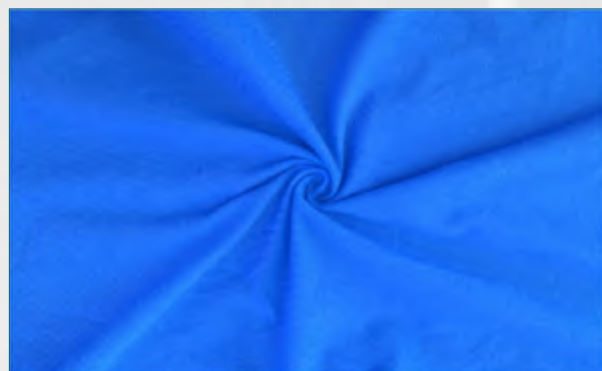
Banjo Cloth



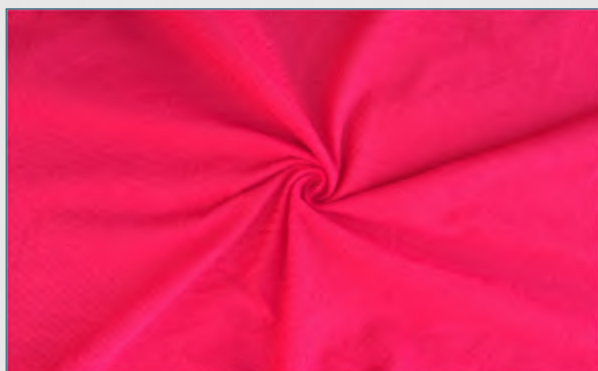
331M60AX-1



331M60AX-2



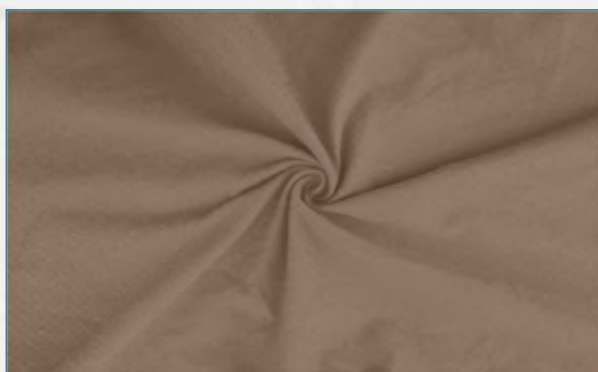
331M60AX-3



331M60AX-4



331M60AX-5

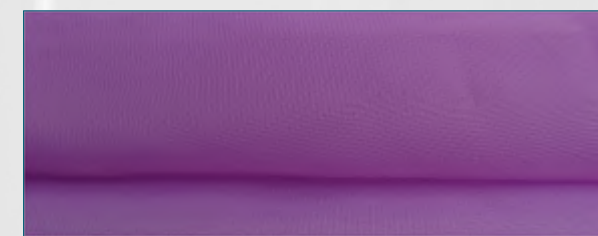


331M60AX-6

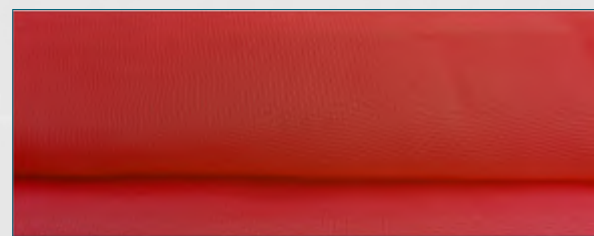
Chelloffon Drapes



320M58DX-1



320M58DX-2

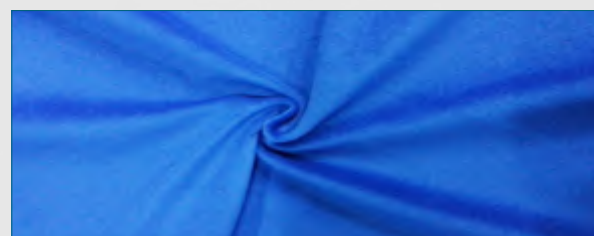


320M58DX-3



320M58DX-4

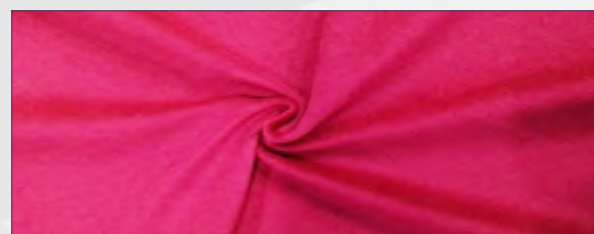
Velvet Drape



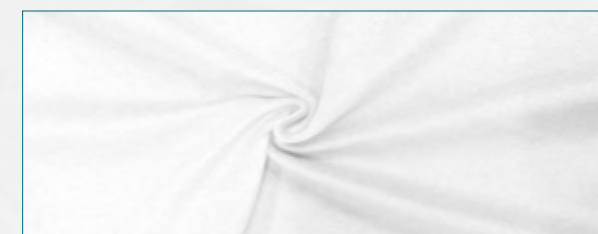
399M58DX-1



399M58DX-2



399M58DX-3



399M58DX-4

Accessories



Upright Extensions Pipe

Code	Description
UEP-100435	Standard 43mm X 3.5mm uprights for 4"
UEP-111001	Standard 42mm uprights for 1'
UEP-111002	Standard 42mm uprights for 2'
UEP-111003	Standard 42mm uprights for 3'
UEP-111004	Standard 42mm uprights for 4'
UEP-111005	Standard 42mm uprights for 5'

Pin & Screw for Base plate slip-lock collar

Code	Description
P&S-110000	Pin & Screw Fits all base pin sizes (3/8" X 1 1/4" flat-head screw)
P&S-110111	Base Plate Pin & Screw Assembly 42mm O.D. X 100mm (4")
P&S-110112	Base Plate Pin & Screw Assembly 42mm O.D. X 150mm (6")
P&S-110113	Base Plate Pin & Screw Assembly 42mm O.D. X 200mm Base
P&S-110114	Plate Pin & Screw Assembly 42mm O.D. X 400mm
P&S-110221	Base Plate Pin & Screw Assembly 46mm O.D. X 100mm (4")
P&S-110222	Base Plate Pin & Screw Assembly 46mm O.D. X 150mm (6")
P&S-110223	Base Plate Pin & Screw Assembly 46mm O.D. X 200mm
P&S-110224	Base Plate Pin & Screw Assembly 46mm O.D. X 400mm
P&S-110331	Base Plate Pin & Screw Assembly 50mm O.D. X 100mm (4")
P&S-110332	Base Plate Pin & Screw Assembly 50mm O.D. X 150mm (6")
P&S-110333	Base Plate Pin & Screw Assembly 50mm O.D. X 200mm
P&S-110334	Base Plate Pin & Screw Assembly 50mm O.D. X 400mm
REK-AU-SS42	Base Plate Screw shaft Assembly 42mm O.D.
REK-AU-SS46	Base Plate Screw shaft Assembly 46mm O.D.
REK-AU-SS50	Base Plate Screw shaft Assembly 50mm O.D.
REK-AU-SS42K	Base Plate Screw shaft Assembly 42mm O.D.
REK-AU-SS46K	Base Plate Screw shaft Assembly 46mm O.D.
REK-AU-SS50K	Base Plate Screw shaft Assembly 50mm O.D.

Hanger

Code	Description
H-120101	Shelf Hanger
H-120201	In-Tube Crossbar Hanger
H-120301	Permanent Install Hanger
H-120302	Permanent Install Hanger

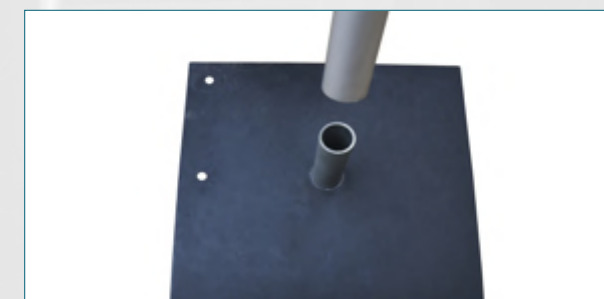
Hanger

Code	Description
H-120401CAP	The connection box for 8 crossbars

Installation steps



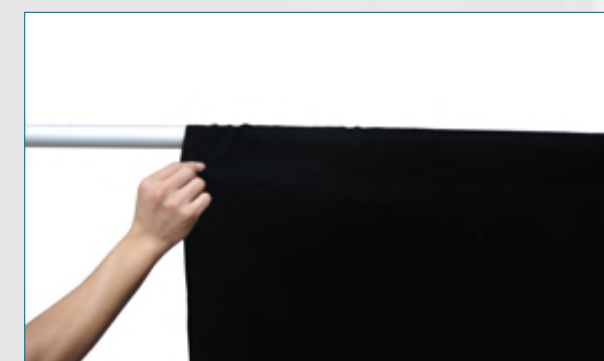
1.Connect the base and the base pin.



2.Fit the upright and the base.



3.Slip on the Upright



4.The drape across the crossbar.



5.Fit the upright and the crossbar.



6.You're done, and you've got a beautiful wall of pipe and drape.

Square Roof Tent



Pipe Roof Tent
 Pipe Roof Tent comes from a square pipe system plus a roof top section. Widely used for trade show, event, wedding decoration.
 Component:
 4 Upright & 4 Basement
 4 Standard Crossbar
 4 Special Crossbar
 Mid - Connector



Square Normal Tent	
Code	Description
RK-NT6X10	4 X TS610 and 4 X TDS610 with Chelloffon Drapes
RK-NT7X12	4 X TS712 and 4 X TDS712 with Chelloffon Drapes
RK-NT8X14	4 X TS814 and 4 X TDS814 with Chelloffon Drapes
RK-NT9X16	4 X TS916 and 4 X TDS916 with Chelloffon Drapes

Square Roof Tent	
Code	Description
RK-RT6X10-D2185	4 X TS610 and 4 X TDS610 with Chelloffon Drapes
RK-RT7X12-D2625	4 X TS712 and 4 X TDS712 with Chelloffon Drapes
RK-RT8X14-D3060	4 X TS814 and 4 X TDS814 with Chelloffon Drapes
RK-RT9X16-D3500	4 X TS916 and 4 X TDS916 with Chelloffon Drapes

Photo Booth Package



Our concept is simple. We use standard pipe and drape, the same items you would see in any trade show booth and make some modifications to make it more user friendly. Although we offer any size and height you need, the most common size ranges from 5 to 8 feet in diameter and 6 to 8 feet high. The adjustable drape supports allow you to adjust your width to serve your customers needs. Adjustable uprights are also available for easy transport in vans or cars.



RK-PBP06X06-388M Photo Booth (6' x 6' Room) Package	
Pipe and Drape Photo Booth Includes:	
✳ Four 500X500X5mm large bases	
✳ Four 8-foot uprights	
✳ Five 6-foot drape support rods	
✳ 20 panels of 8-foot height Rayk Velour Drapes	

RK-PBP10X10-388M Photo Booth (10' x 10' Room) Package	
Pipe and Drape Photo Booth Includes:	
✳ Four 500X500X5mm large bases	
✳ Four 8-foot uprights	
✳ Five 10-foot drape support rods	
✳ 20 panels of 8-foot height Rayk Velour Drapes	

Packing

Carton



Packing:
4 uprights.



Packing:
6 crossbars.



Packing:
5 bases.



Packing:
20 base pins.

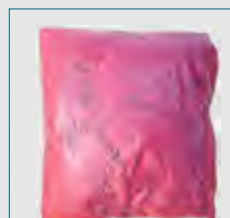
Bag



Packing:
4 uprights or
crossbars.



Packing:
2 bases.



Packing:
drape.



Packing



(RK flight)cases to pack upright,drapes and baseplate.



RK cases to pack base.



RK cases to pack crossbars.

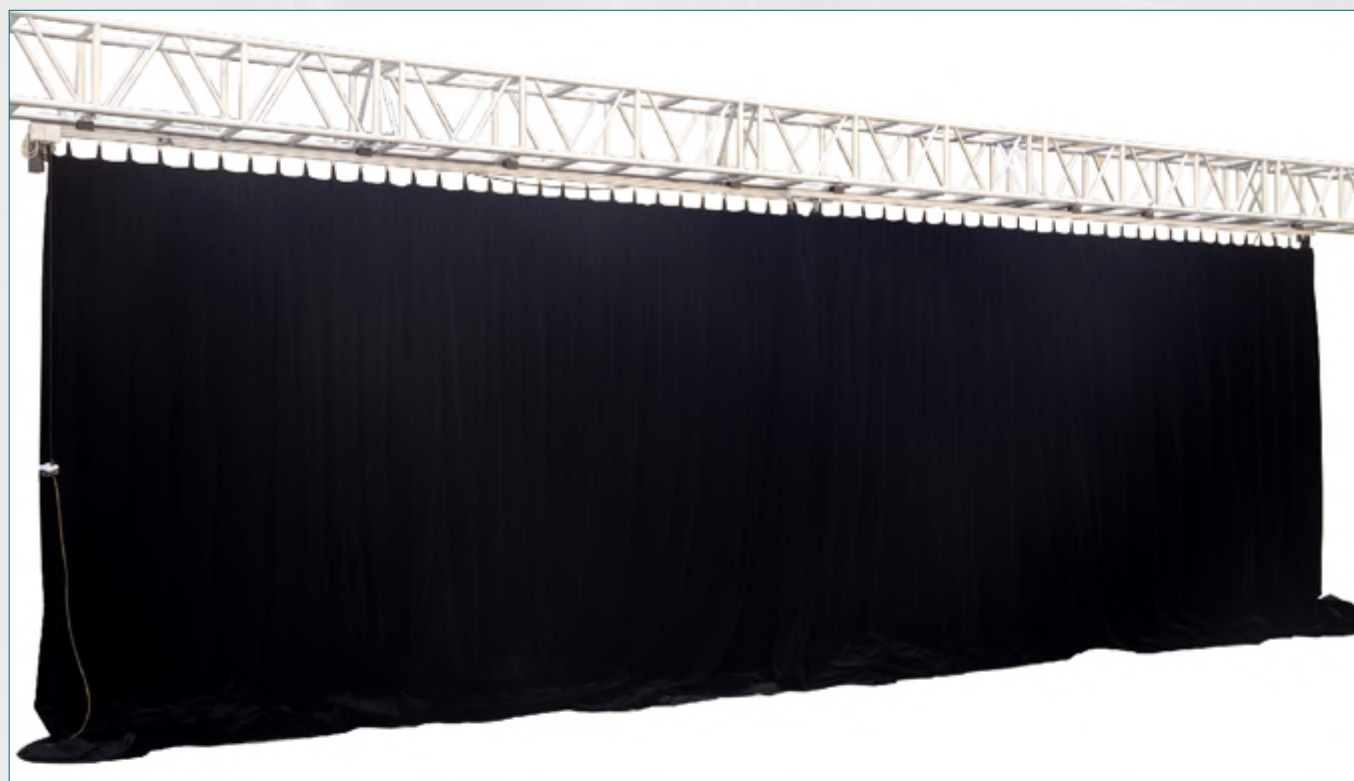


RK cases to pack uprights.



RK cases to pack drapery

Motorized curtain



aluminum Electric Curtain rail is Stage-specific rail which is durable and can be equipped with a constant speed motor to pull the curtain.

With big power motor, the rail can pull a curtain of 30-200kg with maxi length of 30 meters at fast speed.

Curtain hooks is made to be a T shape with bearings on the top injected with plastic material on the surface.

Every single hook can bear weight of 15kg and run smoothly with little noise. It can stop at any place of the rail.

Applications: theaters, multi-purpose hall, meeting rooms, ballroom, hotel.etc
We provide comprehensive technical support.

A complete set of electric curtain rail will have the following components: (excluding Accessories for lifting and installing the rail on the wall)

Special aluminum track, track pulley, curtain hooks, uniform curtain motor



Aluminum curtain rail of Stage-specific



Rail pulley



Uniform curtain motor for stage-specific



Motor specification

Curtain wight : 30-200kg
Length scope for rail: 0-30m
Bearing weight for hook: 15kg
Motor power: 25W-200W
1300r/min

Hooks for curtain



T-curtain hooks with bearings and wheels with injection outside;bearing weight for single hook: 15kg
It needs 3-5 hooks for every meter of rail.



Projects

